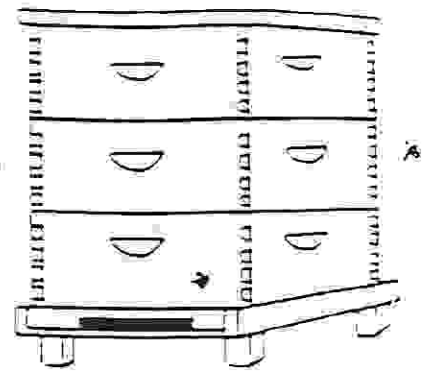
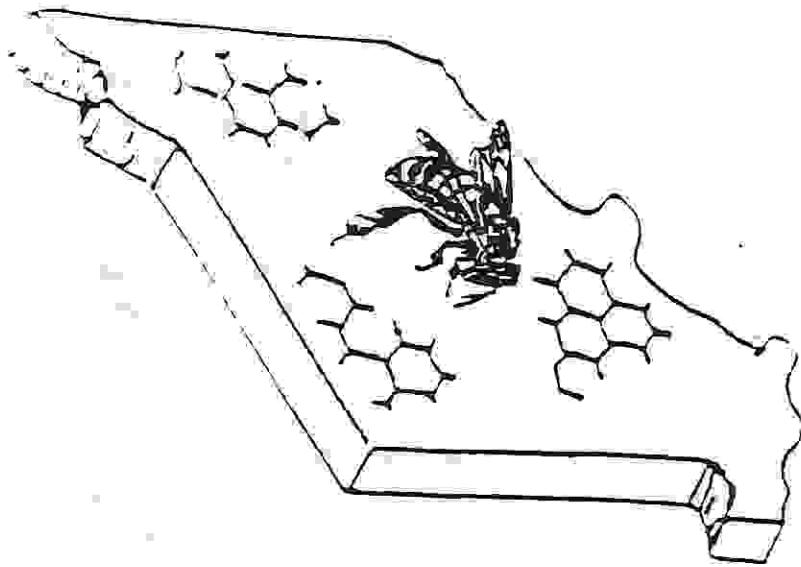


Dec. 1996

Missouri State Beekeepers Association



December 1996

Merry Christmas

President

Neal Bergman
P.O. box 591
Kennett, Mo.
63857
(573) 888-1301

Vice President

Dan Adams
rt. 10 box 1157
Springfield, Mo.
65803
(417) 833-4125

Treasurer

Ron Vivian
P.O. box 448
Oak Grove Mo.
64075
(816) 690-7516

Secretary

Don Moore
15 Kathryn Dr.
St. James Mo.
65559
(314) 265-8706

*Editor &
Academic Advisor*

Ray Nabors
University of Mo.
P.O. box 1001
Caruthersville, Mo.
63830
(573) 333-0258

Program Chair

Larry Hensley
13520 Old
Jamestown rd..
Florissant, Mo.
63033
(314) 355-6935



PRESIDENT'S PAGE

HO! HO! HO! Merry Christmas and Happy New Year! I hope this letter finds everyone enjoying a season filled with joy, happiness and excitement for the beginning of a new year. I know I sure am thankful for the blessings this last year has brought my family, and I am looking forward to the challenge of another year.

I guess we made it through the first year of my presidency, what a learning opportunity! I would certainly like to thank everyone that has helped on projects this last year, one of them being to push me in the right direction (sometimes, I don't push very easy).

We had a good meeting in Jefferson City with nice displays by the suppliers and the fine program Larry put together. We had a nice turnout for the class that Ray Nabors and Ian Brown put on that Friday afternoon and the meetings on Saturday. Hopefully, there can be more of these type classes. We're looking to try to have more beginning classes as well as going into the next levels. We haven't emphasized the level above beginning beekeeping enough; therefore, we are losing a lot of people at this point Food for thought.

The latter part of October, I went to a joint commodity group meeting in Jefferson City at the Runge Center. Most of the groups were represented, and a lot of good information was shared. The middle of November, I was happy to go and enjoy a meeting with the Springfield beekeepers. They have a real nice group, and I thank them for having me. Several ideas were brought up for the meetings, thanks for the suggestions. If anyone else has a topic they want covered, give us a call. By the time this newsletter goes out, we will have been to the Governor's Conference on Agriculture at Tan-Tar-A for the taste of Missouri Promotion. In January or early February, we will be having our annual executive board meeting. In February, I will be attending the Fruit and Vegetable Growers Conference. Hopefully, I can fit in a few visits to some more locals before our next meeting. Give me call.

Sounds like a good program in Memphis, TN with the AHPA and also in Norfolk, VA with ABF in January. Hope to see you there. Congratulations to Jean and Casper Blecha on winning the drawing at the state meeting for a one night stay in Memphis for the AHPA meeting.

Thanks,
Neil

Missouri Nucs
4 frame, @ Mid April
order early
\$36.00 ea.
Limited quantities

Michael Meyer
(417)882-8008
60 illinois supers
Excellent shape
\$15.00 each

BeeNews

General Mills, maker of *Honey Nut Cheerios*, announced a campaign to raise funds for honey bee research. There will also be promotional activities designed to draw attention to the loss of honey bee colonies due to mite infestations. General Mills recognizes American dependance on the honey bee. The pollination of orchards, farms, and gardens was mentioned in company statements. The company believes that without the honey bee, food prices will rise and our environment will suffer.

The focal point of the "Help save the Honey Bee" program is boxtop redemption. General Mills will contribute twenty five cents to apiculture research for each Honey Nut Cheerios bee character that is clipped from the front of the box and returned to the company. There will not be any instructions or promotions printed on the box.

The redemption program was announced on television and in the news on Wednesday, October twenty third. The media event was attended by Dr. Eric Mussen of the University of California at Davis, Jerry Stroope of the American Honey Producers Association and representatives from General Mills. The interviews were conducted at twenty four local television stations and up linked by satellite to news anchors. Eric Lucas of General Mills said that the "Help Save the Honey Bee" campaign will raise funds for research to combat the threat to honey bees from *Varroa jacobsonii* and *Acarapis woodii*. Mr. Lucas is the Marketing manager for General Mills. The company is prepared to donate up to \$100,000.00 for honey bee research if 400,000 bees are clipped from the boxes and returned to General Mills. The funds will be evenly distributed to three state universities. The universities that will receive funding include the University of California at Davis, The University of Minnesota and Michigan State University. Dr. Roger Hoopingarner will retire after this year and does not expect that Michigan State University will continue their program of honey bee research. Dr. Eric Mussen will likely continue apiculture research at the University of California at Davis. Dr. Marla Spivak will probably work on the project at the University of Minnesota.

In addition to the box front bee return program, the General Mills company is encouraging the public to donate additional money to the campaign. This money will be passed along to the three designated universities as contributions for continued research. All contributions should be sent to **"Help Save the Honey Bee". P.O. box 5450 Minneapolis, Minnesota 55460-5450**. If you wish to acquire an information packet from the company or hear more information, call the **"Help Save the Honey Bee" Hotline at 800-362-2006**.

Initially, the United States Department of Agriculture was invited by General Mills to become a co-sponsor. General Mills wanted the USDA to accept the research money for their bee research labs in Tucson, Texas and Louisiana. The USDA was unwilling to endorse the private promotional campaign of the company. The kick-off press conference was moved from Washington to Minneapolis where General Mills headquarters is located. California was targeted for a full blown press conference. That was scrubbed in favor of the scaled - down satellite interview. A twenty city tour planned for this fall was also scrubbed. This would have taken the message of the plight of the honey bee to museums and nature centers around the country. Curriculum assistance for teachers regarding the honey bee through the world wide web was also discussed. Future educational activities are questionable. The escalating cost of the program is responsible for scaling back the effort. The cereal introduced in 1978 and the bee in 1979, has honey as the fifth ingredient and sugar as the second ingredient. Only the box front bee counts.

BeeNews

Governor Mel Carnahan has accepted an invitation from QVC Inc. To feature Missouri and a group of Missouri's most unique consumer products on a special national live broadcast. QVC Inc. is the nation's largest electronic retailer. The promotion is called **50 in 50 the '97 Quest for America's Best Tour**. QVC Inc. is searching for the "best kept secrets in Missouri." Twenty products will be selected from categories such as home furnishings, jewelry, health / fitness, beauty, gourmet foods, automotive, apparel and accessories or others. The items which are indigenous to our state, and distributed at the regional level are targets. During our Missouri live on the air show, the selected products will be offered for sale to 56 million U.S. households that view QVC. This is an unprecedented opportunity for your product to receive national exposure.

The QVC team of merchandise buyers will be in Columbia on January 28 and 29, 1997. The live Television broadcast from Missouri will occur during the last half of April. The Missouri Department of Economic Development's Business Information Program will work with QVC to coordinate a trade show which will allow you to present your products to the buyers in an organized and professional manner. To participate in the trade show and have a product considered by QVC, please call **(800)523-2434**. The completed registration packet, along with a \$20.00 registration fee, must be returned to Sharon Gulick, manager of the Business Information Programs, no later than January 22, 1997. If you have questions, contact Sharon at (573)751-4892 or Lisa Licklider at (573)526-5335. The department has a toll free number at (800)523-1434 ext.5.

Rules

1. Products must be manufactured in Missouri / U.S.A. or manufacturer headquarters in State.
2. Products must be fully manufactured in final form. No prototypes accepted.
3. Entrants must finance manufacture of all products.
4. Labeling and product must meet all United States requirements.
5. Product claims must be substantiated and products clear of legal entanglements.
6. QVC will purchase products only by means of a QVC purchase order.
7. Entrants must be able to ship a minimum of \$10,000 worth of product at cost.
8. All products must be in the QVC warehouse 2 weeks prior to date of telecast.
9. All products must be UPS shippable and meet QVC quality standards.
10. The Minimum retail value is \$12.95.
11. The Manufacturer must have the right to sell and distribute the product.
12. The vendor will receive a detailed booklet on QVC quality assurance and shipping policy.
13. Any samples supplied by the vendor to QVC during or after the show will be considered free samples and will not be returned.
14. QVC does not sell products in these categories: junior apparel, furs or fur related products, guns and gun related products, subscriptions, personalized items, 900 phone programs and service products.

*For Sale @ \$6.50 ea, 150 shallow Supers, 9 comp
Ray Batton, Poplar Bluff, MO 63901
(573) 686-4888 after 6pm, Supers in fair condition*

Ray's Remarks

The bee work is mostly finished for this year. It is time to repair equipment. Boxes need to be in good enough condition to eliminate extra unwanted entrances. These extra entrances usually occur at corners where hive tools have gouged out the wood over years of opening hives. These are best replaced or trimmed down so that wooden strips can be attached to give a new rim to the box. Equipment should be painted or treated this time of year also. It is always more important to keep the bees in good condition than to worry about the looks of the equipment in which they are kept. However, equipment should be in good enough condition to work properly.

Inspect bees frequently to determine damage from weather or animals. Hunters or vandals can rob honey stores and leave hives open to winter freezing temperatures. Bears and other animals can overturn colonies. Apiaries should be looked over at least two times per month in winter.

The Farm Bureau will hold their annual meeting December 8, 9 and 10. They have policy resolutions which are sent to our representatives in Washington and our State representatives. Their resolution on beekeeping is as follows: "We support the efforts to keep the apiculture industry viable in the United States. We can import honey, but we cannot import the pollination benefits of the beekeeping industry to American agriculture." We support research to prevent and eliminate the Varroa Mite and the Tracheal Mite that is threatening the beekeeping industry. The underlined portion is proposed as an addition for 1997. The original statement was added at the 1995 meeting. I will attend the 1996 meeting.

Two methods of treating for tracheal mite have been found to be successful and should be used throughout the winter. One is using 2 parts sugar mixed with 1 part vegetable shortening. The other is to soak paper towels in vegetable oil and place these over the brood frames. Either method will work and should be used at any time other than during the honey flow. I tried mixing sugar with vegetable oil as suggested by Richard Taylor and found this doesn't work very well. I do not recommend this procedure, because the bees do not take the mixture well.

There is renewed interest in honey as a wound dressing. It was used during the war between the states and in earlier times for that purpose. Honey has a low pH so that bacterial growth is retarded. It will work for cuts and scrapes if you have not tried it.

There are 211,600 beekeepers in the United States. They are tending 3.2 million bee hives. It is estimated we need more than 4 million hives for adequate pollination. We need more bees and beekeepers.



1-85 N. Winchester
Olathe, KS 66061
800-547-1392
913-793-3957



Mid-Con carries a complete line of beekeeping supplies.

We carry containers, woodenware, wax, medications, gift items, candle making supplies....ordering is just as easy as a phone call...use our toll free 800 # to place your order. We also attend the Missouri State Beekeepers Meetings and will be happy to deliver your order there!

1-800-547-1392



P.O. Box 8257
Hayward, CA 94542

BEEHIVE
BOTANICALS

DID
YOU
KNOW?

Beehive Botanicals, Inc./Propolis U.S.A. has been buying Propolis and hivescrapings for over 20 years.

Call 1-800-283-4274 for current prices, shipping and handling instructions.

We have a full line of Health & Beauty aids as well as Food Supplements made with Propolis. Call for our wholesale order form.

WALTER T. KELLEY CO., INC.

Serving Beekeepers Since 1924

P.O. BOX 240

CLARKSON, KY 42226 U.S.A.

PH: (502) 242-2012



FAX: (502) 242-4801

Draper's Super Bee - We offer fast and courteous service to all beekeepers. We sell all the supplies for beekeeping, bees, queens, and honey for those who run short. Orders are shipped the same day as received in most cases. Free catalog available on request. Hours: Mon-Fri 8-5, Sat. & evenings by appointment. Address: Drapers Super Bee; 914 S st. Auburn, NE 68305 402-274-3725

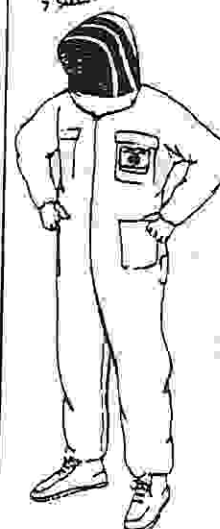
1-800-233-6663



Available in 5 sizes!

Honey Maker® Bee Suit!

CALL FOR DETAILS!



NEW Honey Maker® Bee Suit from Mann Lake Ltd. is the best suit on the market!

Some of the Honey Maker's outstanding features are: Veil material is fire retardant, an elastic waist for a more comfortable fit, two chest pockets with velcro closures, heavy duty zippers at the neck, chest and ankles for easy on and off without removing your boots. This suit was designed to meet Mann Lake's stringent quality standards and is the greatest value for your hard earned dollar! CV-115 Large Suit.....\$120.00



Mann Lake Ltd. County Road 40 & 1st Street
Hackensack, MN 56452 1-800-233-6663!

1-800-233-6663

Ray's Research Review

Szabo, Tibor I. (1996) Scale Colony Records as Indicators for Nectar - Producing Plants in Southern Ontario. *American Bee Journal* 136:733- 736. The Author recorded data for the bloom periods of 92 plant species around Puslinch, Ontario Canada. Four colonies of bees were weighed every day. These records were kept over a period of 4 years. The floral sources of nectar most associated with weight gains in spring were clovers *Trifolium spp.*, black locust *Robinia pseudoacaccia* and basswood *Tilia spp.* Fall weight gains were most closely associated with the bloom of goldenrod *Solidago spp.* Daily average weight gains varied between 7.7 pounds and 14.3 pounds depending on the year. Total weight gains varied from 130 pounds to 230 pounds.

Hung, C. F. Shimanuki, H. and Knox, D. A. (1996) The Role of Viruses in Bee Parasitic Mite Syndrome. *The American Bee Journal* 136: 731-2. The authors examined 191 bees collected from with bee parasitic mite syndrome. These bees were tested for viruses associated with that disease. About 62% of the bees tested did not contain the viruses in question. This means that not all of the dead adult bees died from viral infections. Varroa mites are thought to vector viruses. These results open a distinct possibility that other microorganisms may play a role in bee parasitic mite syndrome.

Liu, T. P. (1996). Breathing Tubes and Varroa Mites. *The American Bee Journal*. 136: 730. The author discusses the possibility that an organ of the mite, the peritreme may be used as a snorkel while the mite hides in the liquid food of the larvae until the cell is capped. Other scientists believe it may be a buoyancy organ.

Nabors, R. A. (1996). Using Mixtures of Different Sugars to Feed Bees. *The American Bee Journal*. 136:785-6. Five established colonies and five packages were fed mixtures of dextrose and sucrose dissolved in water. The concentration of sugars was 50%. It was found that honey bees will accept up to 60% dextrose in the dry solids portion of the feed solution.

Delaplane, K.S. *Honey Bees & Beekeeping*. University of Georgia. This is an excellent book for beginning beekeepers. It is relatively inexpensive (\$12.50) and covers the basics very well. The experienced beekeeper will enjoy reading this. There is a video companion as well. For a copy call (800)359-4040 or write to Beekeeping, Georgia Center for Continuing Education, Athens GA 30602-3603.

When It's Time to Think About Woodenware

Insist on the Best!

Dadant Quality Woodenware

Quality Dadant Woodenware has been the standard of the industry for many years. Our woodenware is manufactured from ponderosa pine which has been hand selected to be free of imperfections. Each board is carefully metered to be certain it is of the right moisture content before it is skillfully milled into the finished product. Commercial grades in bulk quantities are available.

- **WE OFFER FOUR BASIC SIZES OF SUPERS**
- **TWO STYLES OF WOODEN FRAMES TO CHOOSE FROM**

TAKE THE WORK OUT OF BEEKEEPING

**with
DADANT QUALITY
MOISTURE METERED
WOODENWARE**



CALL OR WRITE FOR OUR FREE CATALOG TODAY!

DADANT & SONS, INC., HAMILTON, IL 62341 • Ph. 217/847-3324 Fax #217/847-3660

MISSOURI STATE BEEKEEPERS ASSOCIATION
1997 SPRING MEETING



MARCH 15, 1997
HOLIDAY INN EXECUTIVE CENTER
INTERSTATE 70 AT STADIUM BLVD.
COLUMBIA, MO



MAKE YOUR HOTEL RESERVATIONS TODAY !!
CALL (573) 445-8531 ALL ROOMS ARE \$65.00 FLAT RATE. YOU MUST RESERVE
YOUR ROOM BEFORE FEBRUARY 15, 1997 AND YOU MUST IDENTIFY YOURSELF
AS AN ATTENDEE OF THE MISSOURI STATE BEEKEEPERS MEETING

WE WILL HAVE THE SAME MENU FOR LUNCH THAT WE HAD LAST YEAR.
BAKED CHICKEN, MASHED POTATOES AND GRAVY, HOMESTYLE GREEN BEANS,
SALAD, AND COFFEE OR TEA. COST WILL BE \$11.00.

THE AGENDA WILL BE MAILED AT A LATER DATE.

***MEGA BEE MEETING
IN BEAUTIFUL MEMPHIS, TENNESSEE!***

"Four" national groups will come together in Memphis, Tennessee for the beekeeping event of the year! The American Honey Producers Association, the Apiary Inspectors of America, the American Association of Professional Apiculturists, and the American Bee Research Conference will hold a joint meeting this January 7-11. The meetings will be held at the beautiful Memphis Marriott on Thousand Oaks Boulevard. This year we have a special convention rate of only \$74 plus tax. For reservations call 1-800-627-3587.

There should be something of interest for everyone! Many topics will be visited for the "Profit Motivated Beekeeper". A "Bee Management and Queen Rearing Workshop" is just one of the many planned activities. The best research scientists and bee inspectors in the world will be available to share their knowledge with visitors. Vendors will be abundant! So, plan to come early and stay late for the MEGA BEE MEETING EVENT OF THE YEAR!



***For information call 713-992-0802
or write
The American Honey Producers Association
Route 3, Box 258
Alvin, Texas 77511***

***American Bee Federation Meeting January 15 -18; Norfolk, Virginia
Omni Waterside Hotel, reservations (804)622-6664 ABF rate \$76.00
Meeting Information - (912)472-4233 or ABF box 1038 Jesup, GA 31598
Fly to Bermuda for \$395 on Jan. 10 for beekeepers study tour with ABF***

MISSOURI HONEY QUEEN REPORT

THANKS TO ALL WHO DONATED ITEMS TO THE AUCTIONS HELD AT THE FALL STATE MEETING. I DO NOT HAVE A LIST OF THE ATTENDEES WHO DONATED ITEMS OR I WOULD THANK YOU INDIVIDUALLY. THE SILENT AUCTION HAD SUCH LOVELY ITEMS AVAILABLE FOR BIDDING. THANKS TO SHIRLEY BATTON FOR THE DONATION OF THE TAPE "THE BEES", FOR EDUCATING OUR HONEY QUEENS ABOUT BEES.

WE HAD A LOT OF FUN AT THE EVENING BANQUET WITH WENDY ACTING AS AUCTIONEER. WE MADE \$97 IN THE REGULAR AUCTION, AND \$111 WITH THE DOLLAR AUCTION. ON SATURDAY WE RAISED \$501.50 IN THE SILENT AUCTION. A BIG BONUS CAME FROM THE MONEY RAISED BY THE WOMEN'S AUXILIARY OF MIDWESTERN BEEKEEPING CLUB. THEY MADE A VERY NICE QUILT, AND SOLD CHANCES AT THE STATE FAIR, AND LOCAL MEETINGS. THE TOTAL WAS \$555. TO DATE WE HAVE RAISED THE BALANCE OF THE QUEEN FUND TO \$2686.30. THE QUEEN FUND RECEIVES NO MONEY FROM THE GENERAL TREASURY. ALL MONEY COMES FROM RAFFLES, AUCTIONS, AND DONATIONS.

WE ARE INTO OUR FIFTH YEAR WITH OUR HONEY QUEEN PROGRAM.. I'M SO DELIGHTED WITH THE RESPONSE ALL OF YOU HAVE GIVEN TO THIS PROGRAM. WENDY HAS MADE

REMINDER

1997 MSBA DUES ARE NOW DUE!
DUES ARE \$10 A YEAR--Please use the form on the last page, or pay your dues directly to the treasurer of your local assn. Members who have not paid by March 31, 1997 will be removed from the mailing list. If you have had problems receiving your newsletter in the past, please contact Ron Vivian to be sure that your name is on his list. We are all human, and sometimes mistakes occur.

NEARLY 40 APPEARANCES THIS YEAR. I'M SO IMPRESSED WITH ALL THE BEEKEEPING KNOWLEDGE SHE HAS LEARNED THIS YEAR.

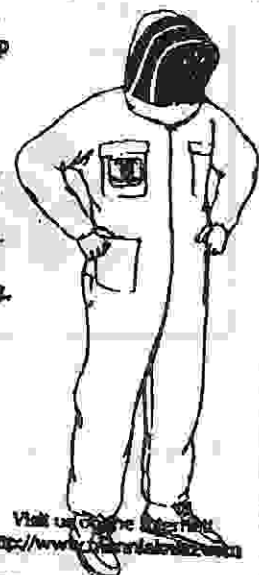
ON HER OWN, SHE HAS APPROACHED EVERY GROCERY STORE IN COLUMBIA, MO; (WHERE SHE GOES TO COLLEGE). MOST OF THEM HAVE ALLOWED HER TO SET UP A DISPLAY ABOUT HONEY, OR ALLOWED HER TO GIVE SAMPLES OF HONEY. IN HER HOME AREA OF NORTHWEST MISSOURI SHE HAS DONE SEVERAL SCHOOL DEMOS DURING VACATION TIME. IT HAS BEEN A CHALLENGE TO ARRANGE TRANSPORTATION; SINCE SHE DOESN'T HAVE A CAR; BUT HER FAMILY HAS CERTAINLY COME FORWARD TO HELP HER. HER MOTHER AND YOUNGER SISTER ARE GOING TO ACCOMPANY HER TO NORFOLK, VA. FOR THE AMERICAN HONEY QUEEN CONTEST IN JANUARY.

AT THIS TIME WE DO NOT HAVE A 1997 QUEEN. IT IS NOT TOO LATE, SINCE WE STILL COULD SELECT A YOUNG WOMAN TO REPRESENT US, AT THE WINTER EXECUTIVE BOARD MEETING.

IF ANYONE KNOWS OF A CANDIDATE FOR MISSOURI HONEY QUEEN, PLEASE CALL SHARON GIBBONS AT (314)394-5395.

Honey Maker[®] Bee Suit

- The best suit made in the USA!
- Industrial weight oil resistant fabric that will stand up to hard use and abuse.
- Flame resistant hood/veil.
- Heavy duty zippers at the neck, chest and ankles.
- Loose fit to prevent binding when bending over.
- Bar tacks at all stress points.
- Higher visibility mesh veil.
- Keep in mind when ordering, these suits are roomy!



CV-105 Sm.....	\$120.00
CV-110 Med.....	\$120.00
CV-115 Lg.....	\$120.00
CV-120 Xlg.....	\$120.00
CV-125 XXlg.....	\$130.00

Maan Lake Ltd.
501 S. 1st St.

Visit us Online: <http://www.maanlake.com>

Hackensack, MN 56452-2001

1-800-233-6663

How to Make Sticky Boards

For Detection and Evaluation of Varroa Mite Infestation

Commercially prepared cardboard sticky boards can be purchased, but they are designed for one time use and are somewhat expensive. The sticky board described here can be made quite cheaply and reused a number of times.

1. Cut a 4' x 8' sheet of light corrugated plastic into pieces 12" x 16". (Coroplast is one of the tradenames used for this product which is usually available from lumber supply stores.) Choose a white or very light color so the mites will be easy to see.
2. If desired, use duct tape to finish the edges of the corrugated plastic pieces and to fashion a pull tab on a narrow end.
3. Mix equal parts of Vaseline and vegetable shortening (Crisco, etc.). Use a foam paint brush to apply a layer of this sticky material to one side of the plastic board. Apply it a little heavier than you would for paint.
4. Place a piece of wire screen or hardware cloth on the sticky side of the board. The screen keeps the bees from the mites that fall and prevents mites that may not be quite dead from catching onto a bee. Window screen is too fine a mesh. Eight spaces to the inch (3 mm) screen appears to work.
5. Insert the sticky board and screen into the hive under the brood nest.
6. Either natural mite fall or use of a chemical (an Apistan strip or tobacco smoke) will result in varroa mites falling to the bottom board and becoming trapped on the sticky board. 48 hours should be allowed for natural fall. 24 hours is sufficient for Apistan or tobacco smoke test. Either method provides only an indication of the mite population.
7. At the end of the test (24-48 hours) remove the board and screen from the hive and examine the hive debris on the sticky boards.
8. Use a magnifying lens to examine closely any suspicious looking particles on the board. Count the number of mites found on the boards.
9. Use Saran Wrap to wrap the board to preserve any suspicious looking material for later positive identification.
10. Use a squeegee to remove the sticky stuff and debris from the boards to prepare them for reuse.
11. Make sure the board and screen are clean and do not pass varroa onto another hive.

- Adapted from Cappings
Kansas Honey Producers Assn.
September 1996

PRESSRELEASE

National Honey Board • 190 Laundry Street • Longmont, CO 80501-5618 • 800-551-7161 • Fax: 303-776-1177

GET COOKIN', HONEY!

Longmont, Colo. — Amateur "chefs" will have a chance to show off their sweet cooking skills this fall and winter when the National Honey Board teams up with *Redbook* and *McCall's* to sponsor honey recipe contests.

In October, *Redbook* will announce a recipe contest calling for quick and easy honey-inspired main dish recipes. Grand prize is \$1,000 cash plus a deluxe set of cookware. Recipes can be sent to *Redbook*, Honey Contest, 224 West 57th Street, New York, NY 10019. Deadline to enter is November 11, 1996. For complete details, please see the October issue of *Redbook*.

In January 1997, *McCall's* will sponsor another honey recipe contest, this one calls for favorite light, low-fat honey recipes. Entries must have 30 percent or less calories from fat. Grand prize is \$1,000 cash. Three cooking baskets valued at \$100 each will also be awarded. For more details, watch for the January 1997 issue of *McCall's*.

The first 100 contestants in each of these contests will receive a complimentary copy of the National Honey Board's new low-fat cookbook.

Get cookin', honey!

###



1996 Missouri State Beekeepers HONEY COOKBOOKS

	Price
Nonmembers	\$7.50 per cookbook
Members	5.50 1-219 cookbooks
Members	4.50 220-up cookbooks

Freight costs will be added to the price.

A case of cookbooks contains 44 books.

Order your cookbooks today!!

Available from:

Art and Vera Gelder
6800 N Kircher Rd
Columbia MO. 65202-7652
(573) 474-8837



RECIPES

Honey Fruit Cake

1 C. Candied cherry halves
1 C. Candied pineapple pices
2 C. Golden raisins
2 C. Coarsely chopped walnuts
1-3/4 C. Brandied mincemeat

2 Tablespoons flour
2 Eggs
1 C. Honey
1 C. Unsifted all purpose flour
1 tsp. Salt
1 tsp. Baking powder

In large bowl, combine prepared fruits, nuts and mincemeat. Mix in 2 tablespoons flour. Beat eggs well. Continue beating while adding honey in a fine stream, fold into fruit mixture. Sift together dry ingredients. Carefully fold into fruit. Spoon batter into 9-inch tube pan that has been greased and botom lined with brown paper. Bake at 300 degrees (slow) about 1-1/2 hours until cake tests done in center. Remove from pan, cool on rack. Decorate with red & green cherries & pineapple chunks. Freezing improves this cake.

Rooks, Hazel C.
1621 S. Ingram
Sedalia, MO 65301

Divinity

2 C. Sugar
1/2 C. Honey
1/2 C. Water
2 Egg Whites beaten stiff
1 tsp. Vanilla

Cook 1st 3 ingredients to soft ball stage. Beat egg whites. Pour 1/2 of hot syrup on egg whites, continue beating. Cook remaining syrup to hard ball stage. Beat into egg white mixture, continue beating until it starts to set, add vanilla (& nuts, if desired). Quickly spoon onto buttered cookie sheets in bite size pieces

Honey Fudge Brownies

1/2 C. Margarine
2-1oz. Squares unsweetened chocolate
1/2 tsp. Salt
1 tsp. Vanilla
1 C. Honey
1/3 C. Unsifted flour
1 tsp. Baking powder
2 Eggs
1 C. Nuts (optional)

In saucepan, melt over low heat, margarine, chocolate salt & vanilla. Remove, blend in honey, flour & baking powder. Add eggs and beat well. Bake 35 minutes in 350 degree oven. Cool on rack 15 minutes.



TO MEMBERS:

We are beginning a new beekeeping year, which means that 1997 membership dues are now due.

If you know of any beekeeper who does not belong to Missouri State Beekeepers Assn., please pass this newsletter on to them and encourage them to join. Dues are \$10.00 per year. Make check payable to Missouri State Beekeepers Assn. If you belong to a local association, pay your dues through local treasurer.

ENCLOSED IS \$_____for_____YEARS OF MEMBERSHIP.

NAME:_____

ADDRESS_____

CITY_____STATE_____ZIP_____

PHONE_____

MAIL TO: Ron Vivian P.O. Box 448 Oak Grove MO 64075

MISSOURI STATE BEEKEEPERS ASSN.
314 Quinimoor Dr.
Ballwin, Mo. 63011

Address Correction Requested

NON-PROFIT ORGANIZATION
U.S. POSTAGE PAID
ST. LOUIS, MISSOURI
PERMIT NO. 1152



26
4/0